

Q S X P E

ZS2PE

FREQUENCIES:

Bulletin	3640 Khz
	7102 Khz

National Call	145,5 Mhz
P.E. Repeater	145,05/65
Grahamstown	145,15/75
Lady's Slipper	145,10/70

*Port Elizabeth Branch of the
South African Radio League*

P.O.Box 462, Port Elizabeth. 6000.



18 SEP 2011

PAGE 1.

THE NEXT BRANCH MONTHLY MEETING WILL TAKE PLACE ON FRIDAY NOVEMBER 20th AT THE Y.M.C.A. HAVELOCK STREET, COMMENCING AT 8 P.M. SEE YOU THERE. OM John Herbst will deliver a talk on communications on the Railways.

1982 S.A.R.L. A.G.M.

If you have any ideas relating to possible motions to be presented at next years League AGM, remember that these have to be submitted to HQ by the end of the year, so you will have to raise the matters at the coming Branch meeting. Give it some thought.

BRANCH ANNUAL SOCIAL GET-TOGETHER, DEC 1981.

The Branch annual end-of-year social get-together this year takes the form of a travelling supper, with transport between the various stop-over points provided by bus. The date for this event is Saturday December 12th. Tickets will cost R10 per couple but this will be reduced by an amount dependent on the money raised by the raffle, as a Branch subsidy. All those who will be attending should note that we will assemble at the QTH of Colin ZS2AO, 5 Hamerkop Street, Cotswold where the party will commence and we will then proceed to the various venues, returning finally to Colins QTH to collect cars etc. The party will commence at 7.30 P.M.

BRANCH RAFFLE.

The Branch has had about fifty books of tickets printed for a raffle the proceeds of which will be divided between the two prizes, namely two very fine Christmas hampers, one to the value of about R70 and the other about R30. Some of the balance of the proceeds will go towards the financing of the Travelling Supper, and R100 will be donated to a charity organisation. The draw for the winners will take place during the travelling supper, as will the draw to determine which charity will receive the donation. As there are so many charities, every one equally deserving, the only fair way of determining the lucky one is by means of a name-out-of-the-hat system. Please let us know the name of your favourite charity, so that it stands a chance of winning. To get back to the tickets, all the books not handed out to members locally have been distributed to members by post, together with an explanatory letter. If you are unable to sell all the tickets sent to you, please let us know as soon as possible, or send the tickets back, as several people are already looking for more to sell, and the more we dispose of, the better.

NOVEMBER P.M.G. EXAMINATION.

By the time you read this, the November exam will be a thing of the past, but we sincerely hope that all who wrote will be successful, and should you not pass, don't give up. There's always next time.

FOR SALE.

FT-200 DC Power Supply in mint condition. Phone Colin ZS2AO at 312471.

BULLETIN ROSTER NOV/DEC.

15th November	Marge ZS2OB	Phone 30-3498
22nd November	Colin ZS2AO	" 31-2471
29th November	Fred ZR2DQ	" 31419 (0422)
6 th December	Dick ZS2RS	" 32-2111
13th December	Brian ZS2AB.	" 30-3498

Please pass along any items of news to the reader for the week or any Committee member. Only in this way can we find out what's happening locally.



CISKEI INDEPENDENCE DEC. 1981

The Port Elizabeth Branch has arranged to set up a station to coincide with the independence of the Ciskei, scheduled for 4 December 1981.

The station will operate on 4,5,6 December. This is a Friday, Saturday & Sunday.

Mike ZS2MJ has arranged a venue at Fort Hare, Alice. This is the first time that

we have had the opportunity of manning a station of this description and you

can well imagine the activity that will take place. Your DXCC in one weekend?

Planning is already at an advanced stage but there is still much to be done.

A 5 element beam has to be assembled here in P.E. , air tested and then broken

down into as few pieces as possible. This will be transported to Alice and re-

erected. Once the station goes on the air, it should be non stop for about

42 hours. We therefore require operators and people to assist with logging.

Unlicenced members as well as ZR licence holders can well assist in this regard.

It is hoped to have the station operational by 18hr00 on the Friday.

Because of salt mine commitments, most members wont make it much before that time.

CAN YOU ASSIST?

Mike ZS2MJ is hard at work and has arranged a venue complete with shower, toilet etc. He has also offered his home in Fort Beaufort, 20 kms away, as a base.

It may also be convenient to hire one room at a local hotel to store clothing,

bath or snatch a few hours sleep. It wont be a picnic, but then again, who

picnics in Alice? It is doubtful whether an opportunity such as this will come

our way again. If you think you can assist in any small way whatsoever, give

me a ring on 54-4545 (Off) or 32-2111 (Home) and discuss it before you say no.

73. Dick ZS2RS.

PAGE 3.

MINUTES OF THE GENERAL MONTHLY MEETING OF THE PORT ELIZABETH BRANCH OF THE SOUTH AFRICAN RADIO LEAGUE HELD AT THE Y.M.C.A. ON 16TH OCTOBER, 1981.

PRESENT: 12 members and visitors.

APOL: ZS2JR, ZS2PS.

The Chairman welcomed the ladies, all the members and a special welcome to Wilf Eastleigh who had seen our notice in Newton Park Library and whose interest had been stimulated and he wished to get involved. The Chairman apologised that the speaker for the evening was unable to attend due to the fact that he was in hospital but he would speak at the next meeting.

The Chairman also said that he had a sad announcement to make. One of our older members, Piet Pretorious ZS2AG had become a Silent Key during the morning and members stood in silence in his memory. If appropriate, the Branch would send flowers to the funeral.

MINUTES: The Minutes of the Meeting of 21st August, having been published and circulated in QSX-PE were taken as read, proposed by Lionel ZS2DD and seconded by Frank ZS2CY.

ARISING: The Chairman said that the operation of the station and display at "The Eye of the Needle" had gone off smoothly, but the feedback was an unknown factor.

The SAAMSAT conference had taken place in Cape Town the previous weekend and if Peter ZS2PS arrives, he will be asked to tell members about it.

With regard to the crystal filter for Lady's Slipper Repeater, Brian ZS2AB was asked to let Peter ZS2PD have all the details necessary for the import permit.

At the last Committee meeting, various matters were discussed as follows:

Branch Raffle - rather than sell tickets for other Branches repeaters, we do it for ourselves and put the money to good use. Optimistically 500 tickets at R1 each were printed. The prizes were to be two Christmas Hampers, one for R70 and one for R30. The Chairman's personal suggestion that providing all tickets were sold, the allocation should be as follows: R100 for prizes, R100 to a charity and the balance to subsidise the travelling supper. This suggestion was seconded by Fred ZR2DQ. Members were asked to let us know of their pet charity and one would be drawn from the hat. The lucky numbers would be drawn at the Travelling Supper. If the tickets were sold, it would mean that members could have their Christmas party at no cost to themselves or the least possible. The Secretary would draw up a letter to this effect and post tickets to all those not present.

FINANCE: The Treasurer said that subs were now coming in very slowly. An electricity account for R7 was received.

CORRES: Minutes of Council meeting. The Chairman read various sections pertaining to Band planning and said that the minutes were available for members to study.

GENERA: Lionel ZS2DD said that although UOSAT satellite had been launched a few weeks previously, nothing had been mentioned about this on Headquarters bulletin. Mention was also generally made, that Headquarters bulletin readers should also read through the bulletin before transmission, to avoid unnecessary mistakes. The Branch would once again be running three JOTA stations from 2 - 5.30p.m. and 9.30a.m. - 1p.m. on Saturday and Sunday respectively from Newton Park, Walmer and Summerstrand and special callsigns had been applied for but no reply had as yet been received.

There being no further business, the meeting was closed at 8.45p.m. and tea was taken, followed by a rag-chew.

sgd; R.W. Schönborn ZS2RS
Chairman

sgd: M.T. Weller ZS2OB
Secretary

CARE AND MAINTENANCE OF NICAD BATTERIES by ZS5DN.

Part 4 - Preventive Maintenance.

Cells which are stored as charged should be charged once a month in order to ensure that they are charged when supplied to the user. Cells stored at temperatures from 4 deg C to 45 deg C will keep their physical properties for years.

Cells should be charged and discharged in the manner which has been suggested in these articles. They should be routinely examined for blowing off or leakage. Cells exhibiting defects should be replaced with matched cells. Cells should be phased out of service after two years of use. Cells should not be used when the ambient temperature exceeds 38 deg C. It is to be noted that the loss of voltage per cell due to temperature will correspond to 20-30 mV at 0 deg C and a further 20-30mV will be lost by -16 deg C. Fig 4 shows the cell potential versus charging time. The rise at 13h may be detected by sophisticated electronic means, as may the peak at 20h. These and other characteristics may be used to control the charger. Alternatively a straightforward time program may suffice. Fig 4 also shows an insert giving charge retention whilst in storage or out of use. Fig 5 shows the basic circuit of a constant current charger. Fig 6 shows a dummy load which may be used to determine the capacity of a cell-a measure of its remaining life. The dummy load, together with the charger may be used to determine the acceptability of a new cell. When a battery has to be charged in a fixed time period, such as an off-duty shift, the "drop-charging" method may be used. The charger is "matched" to the battery in such a way as to discharge the battery quickly (for reasons discussed earlier in this series) and then to charge it fully in the remaining time without overheating it.

Design: Should a silicon diode be placed across each cell in a battery reversal below 0,7 volt will be prevented. It is hoped that the information provided in this series will help users to obtain better satisfaction from their NICAD cells, and it may also dispel some of the misconceptions held about these cells, which appear widespread.

References: As references I have used (1) Encyclopaedia Britannica, (2) Communication International June 1977, B. Norton. (3) Applications Engineering Handbook, GE Battery Products Section, (4) Appendices A and B, Datascope Service Manual, and (5) Eveready South Africa (Pty) Ltd.

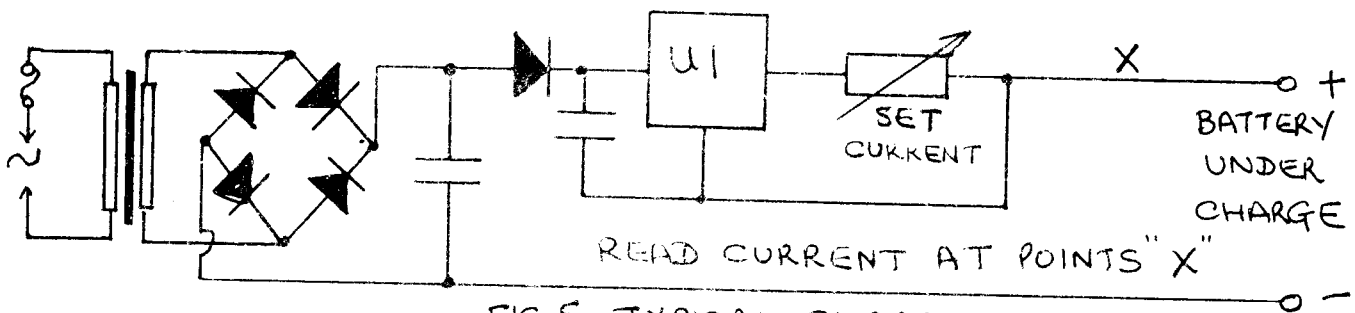


FIG 5. TYPICAL CHARGER.

U1, U2 ARE
3 TERMINAL
CURRENT
REGULATORS.

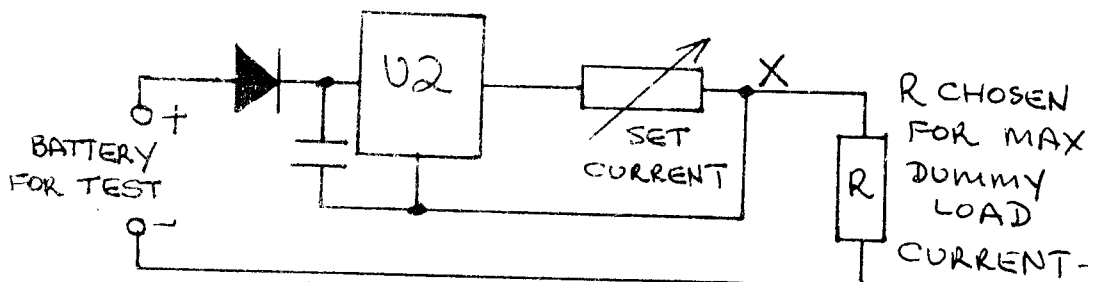


FIG 6. DUMMY LOAD.

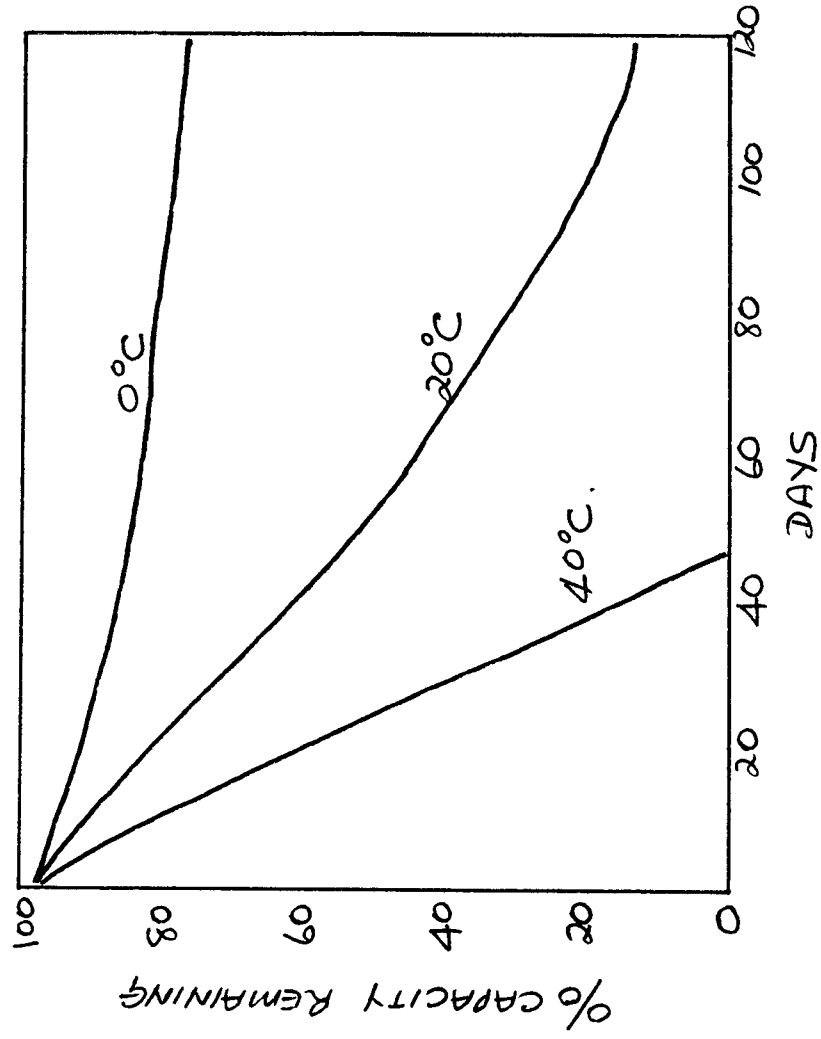
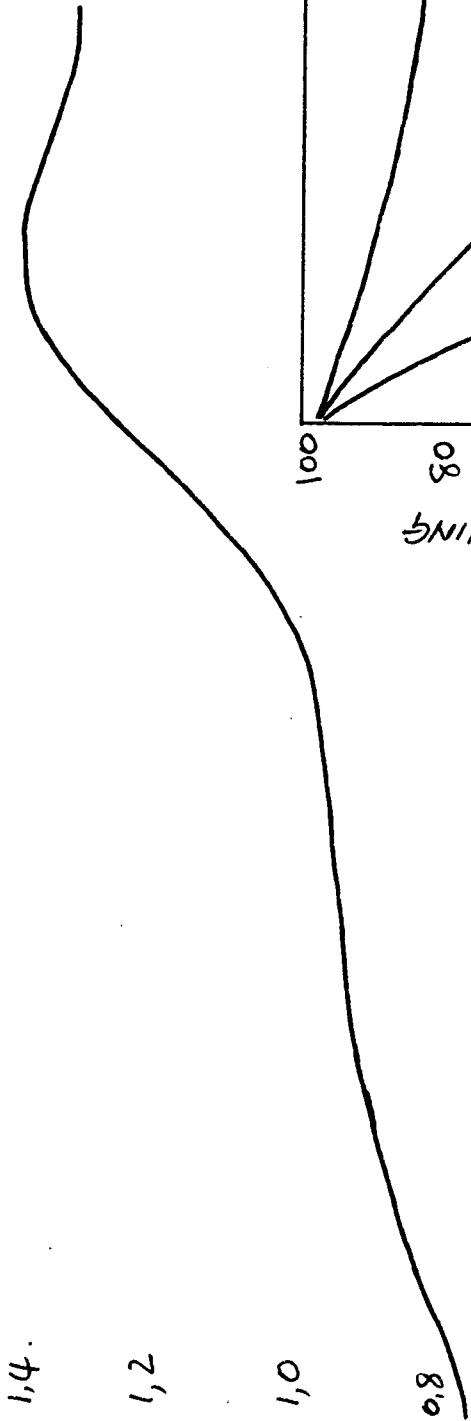


FIGURE 4:

5 10 15 20 25
CELL POTENTIAL VERSUS CHARGING TIME IN HOURS, WHERE $I_c = 1/10 C$.

.PAGE 6.

W1AW DX BULLETIN NOVEMBER 5, 1981.

Thanks to N1AJ0, K1MM, W1TRC and K1MEM of the Southern New England DX Association for the following information:

UPPER VOLTA: W9GW will be signing on XT2 call starting 7 November.

GUINEA BISSAU: J5HTL will be ending his operation 13 November but will concentrate his efforts on 80 meters until then.

FRANZ JOSEF LAND: Look for UK1PG0 on 14025 KHz at 0300 Z. He will QSY to 40 meters on request.

AGALEGA: 3B6CF is now on and very active on all bands with SSB and CW.

ANTARCTICA: FB8YH has been worked on 7025 KHz at 1600Z and on 14250 KHz at 2245Z.

CROZET: Check 14225 KHz at 1400Z for FB8WG.

OGASAWARA: JH2OHX/JD1 spends a lot of time on 15 and 40 meter CW. He can also be found on the low end of the 20 meter CW band from 1100 to 1200Z.

SOUTH GEORGIA: VP8AEN has a Saturday schedule at 0930Z on 14253 KHz.

He will leave South Georgia in March and there is no amateur scheduled to go in with the replacement crew in March of 1982.

REPUBLIC OF THE PHILIPPINES: KP4CK/DU2 can often be found on 7008 KHz after 1130Z.

SRILANKA: Listen on 7003 KHz at 0000Z for 4S7MX.

BAHRAIN: A9XEC has been active on 40 meter CW on 7006 KHz at 0300Z.

COCOS KEELING ISLAND: VK9NYG daily on 28520 KHz at 1330Z.

SOUTH ORKNEY ISLAND: Chances are pretty good to hear and work VP8AJM and VP8AJL or VP8ZR on 21280KHz between 2100 and 2300Z any night of the week.

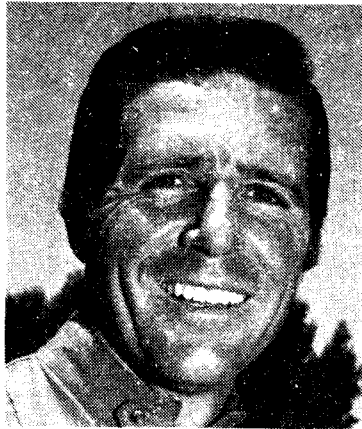
ANTIGUA: Members of the Southwest Ohio DX Association will be manning station V2ADX now until 9 November on 160 through 10 meters 24 hours every day. QSL's will be handled by W9SWM. Operators W9SWM, KJ8R, WB8QXN, W8RKL and WD8IDZ may also use their own call signs /V2 designator as time permits.

RTTY. SZ1DU will be SZ1DU/5 on RTTY starting 9 November through 15 Nov. from Rhodes in the DODECANESE.

DODECANESE: SZ1NA/5 will be on all bands CW effort from the Dodecanese from 9 - 15 November.

Our thanks to Lionel ZS2DD for passing along this DX news.

For quite a long time now we have been experiencing considerable difficulty with the satisfactory reproduction in QSX-PE. According to our printers, this has been due to low-density typing of the original material submitted to them, due to major problems with the electric typewriter which the Branch purchased. We have now acquired a very nice Remington electric machine which produces a very clear original, with a slightly larger typeface than the old machine, making it all easier to read. This is the first edition of QSX to be produced on the new machine, and we sincerely hope that all will be well and that you will not have any difficulty reading your copy this month. You will have noticed that last months edition was only printed on one side of each page - a Printers Gremlin we hear!



We asked Gary Player to play something new and revolutionary, the world's most advanced TV Games:

Intellivision.

It's the most fascinating technological magic of our time and we wanted him to tell you all about it. But Gary was having so much fun, all he could say about Intellivision was:

"It's incredible."

Take the future in your hands and let your imagination fly.

Select your spaceship squadrons and take off into a three-dimensional battlefield to face the alien invasion forces. Or step onto the centre court at Wimbledon and put your tennis title on the line. No matter what Intellivision TV Games you play, you just can't help getting involved. Intellivision's electronic circuitry is built around a powerful 16-bit microprocessor that creates sophisticated graphics, game movements and sound effects that'll capture your imagination like nothing else you've ever experienced.

Coming! The Keyboard attachment that turns your Intellivision TV Game System into a home computer.

In 1982 there will be a unique keyboard component available into which you'll be able to plug your Intellivision TV Game System to create your very own home computer. Imagine that. You'll be doing your own home finances, analysing share market reports, learning foreign languages, taking guitar lessons and following your own personalised physical fitness programme in the comfort of your home. In fact, there'll be a whole range of educational and self-improvement computer programmes available for you and your family.



The new generation of TV Games

INTELLIVISION

by MATTEL

Wilkins East Roberts 204

Another quality product distributed by Melronics (Pty) Ltd. Telephone Johannesburg 786-3216, Cape Town 65-1911/65-6041, Durban 81-4947 81-4027.

TRADE ENQUIRIES:

SUMMIT DISTRIBUTORS

Manufacturers Representatives & Television Aerial Specialists

25/27 REED STREET
PORT ELIZABETH
P.O. BOX 500
6000

TELEPHONE 54-4545
TEL. ADDRESS "SUMMIT"
TELEX 74-7978